



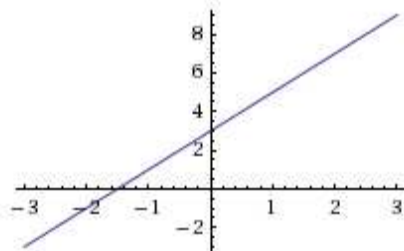
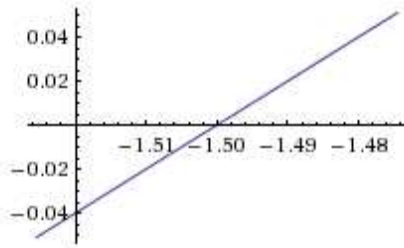
# TIPOS DE FUNCIONES

**Fernando Riera | 2º Bach. B**  
IES La Nucia | Curso 2010/2011

# LINEAL

$$y = 2x + 3$$

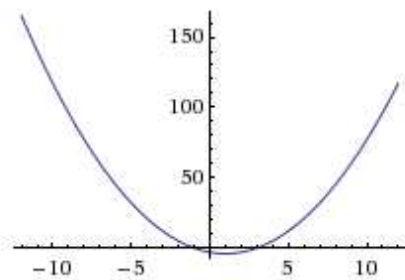
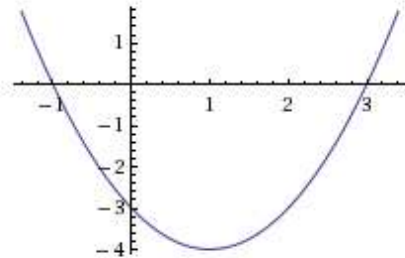
Plots:



# CUADRÁTICA

$$y = x^2 - 2x - 3$$

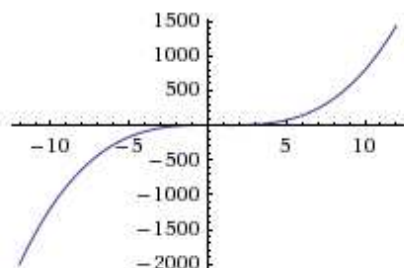
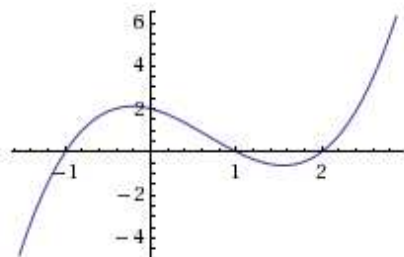
Plots:



# POLINÓMICA

$$y = x^3 - 2x^2 - x + 2$$

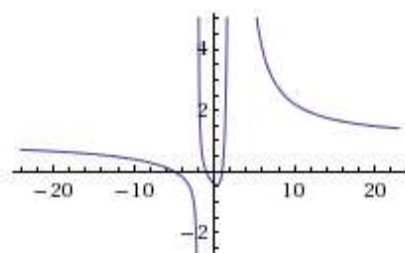
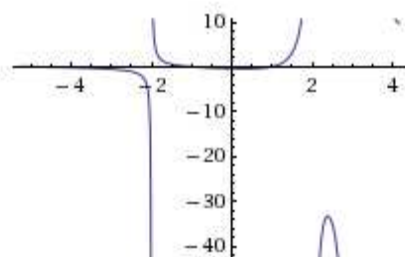
Plots:



# RACIONAL

$$y = \frac{x^3 + 5x^2 - x - 5}{x^3 - 3x^2 - 4x + 12}$$

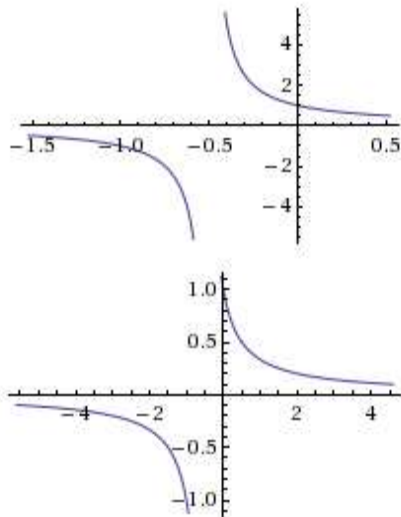
Plots:



# PROP. INVERSA

$$y = \frac{1}{2x+1}$$

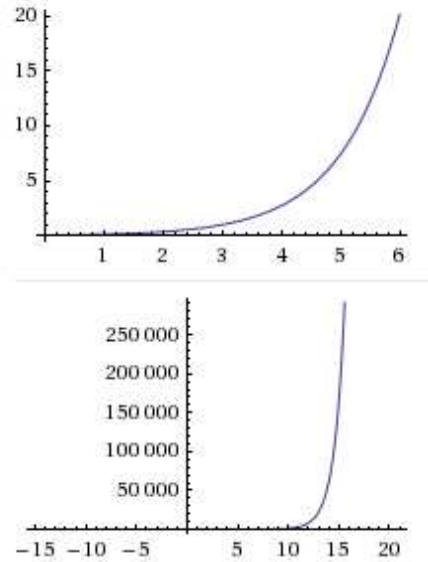
Plots:



# EXPONENCIAL

$$y = e^{x-3}$$

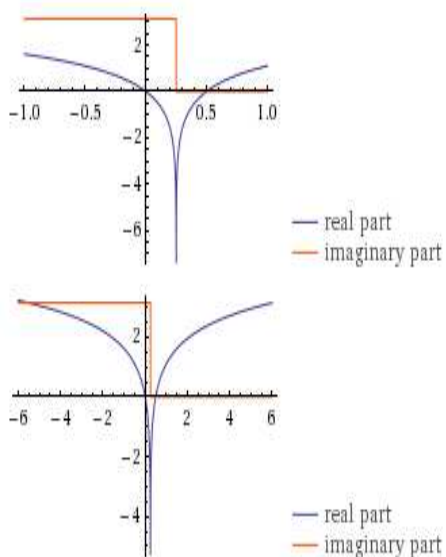
Plots:



# LOGARÍTMICA

$$y = \ln(4x-1)$$

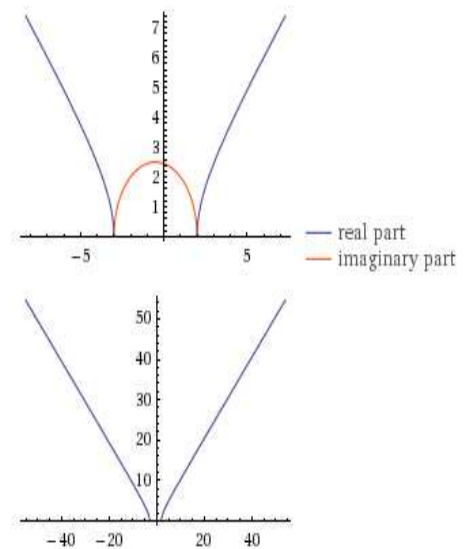
Plots:



# IRRACIONAL

$$y = \sqrt{x^2 + x - 6}$$

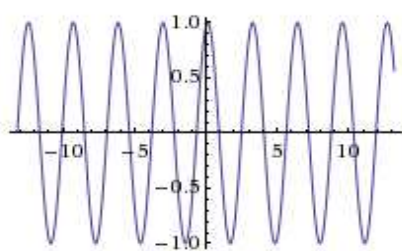
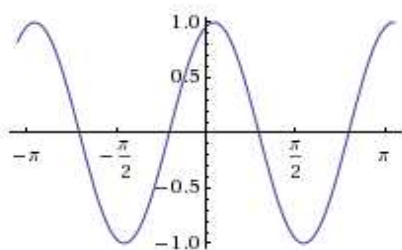
Plots:



# SENO

$$y = \sin(2x - 5)$$

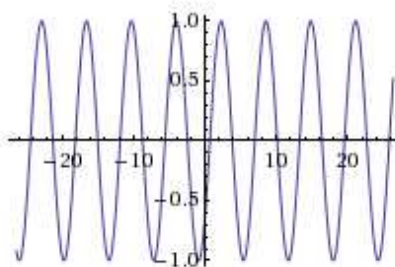
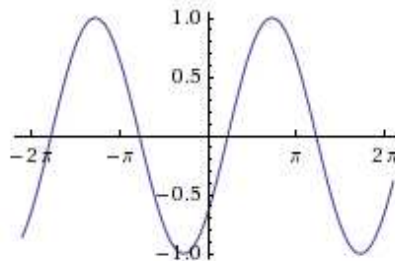
Plots:



# COSENO

$$y = \cos(x + 4)$$

Plots:



# TANGENTE

$$y = \tan(4x - 3)$$

Plots:

